

"O Crux Ave"

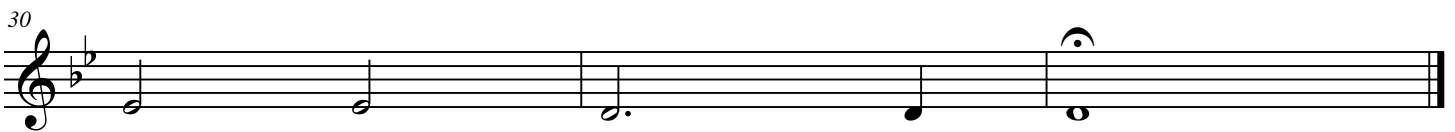
Arranged for String Quartet

Violin 2

G. Pierluigi da Palestrina (1525-1594)

Arr. Dan Oppenheim

♩ = 56



"O Crux Ave"

Arranged for String Quartet

Viola

G. Pierluigi da Palestrina (1525-1594)

Arr. Dan Oppenheim

♩ = 56



"O Crux Ave"

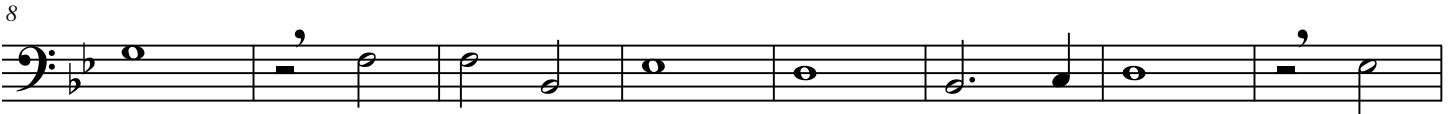
Arranged for String Quartet

Cello

G. Pierluigi da Palestrina (1525-1594)

Arr. Dan Oppenheim

♩ = 56



"O Crux Ave"

Arranged for String Quartet

Score

G. Pierluigi da Palestrina (1525-1594)
Arr. Dan Oppenheim

♩ = 56

Violin 1
Violin 2
Viola
Cello

This system contains the first seven measures of the score. The Violin 1 part begins with a half note G4, followed by a half note A4, and then a series of eighth notes: B4, A4, G4, F4, E4, D4, C4. The Violin 2 part starts with a half note G4, followed by a half note A4, and then a series of eighth notes: B4, A4, G4, F4, E4, D4, C4. The Viola part begins with a half note G3, followed by a half note A3, and then a series of eighth notes: B3, A3, G3, F3, E3, D3, C3. The Cello part starts with a half note G2, followed by a half note A2, and then a series of eighth notes: B2, A2, G2, F2, E2, D2, C2.

Vln. 1
Vln. 2
Vla.
Vlc.

This system contains measures 8 through 15. The Violin 1 part continues with a half note G4, followed by a half note A4, and then a series of eighth notes: B4, A4, G4, F4, E4, D4, C4. The Violin 2 part starts with a half note G4, followed by a half note A4, and then a series of eighth notes: B4, A4, G4, F4, E4, D4, C4. The Viola part begins with a half note G3, followed by a half note A3, and then a series of eighth notes: B3, A3, G3, F3, E3, D3, C3. The Cello part starts with a half note G2, followed by a half note A2, and then a series of eighth notes: B2, A2, G2, F2, E2, D2, C2.

Vln. 1
Vln. 2
Vla.
Vlc.

This system contains measures 16 through 23. The Violin 1 part continues with a half note G4, followed by a half note A4, and then a series of eighth notes: B4, A4, G4, F4, E4, D4, C4. The Violin 2 part starts with a half note G4, followed by a half note A4, and then a series of eighth notes: B4, A4, G4, F4, E4, D4, C4. The Viola part begins with a half note G3, followed by a half note A3, and then a series of eighth notes: B3, A3, G3, F3, E3, D3, C3. The Cello part starts with a half note G2, followed by a half note A2, and then a series of eighth notes: B2, A2, G2, F2, E2, D2, C2.

22

Vln. 1

Vln. 2

Vla.

Vlc.

Detailed description: This system contains measures 22 through 28. It features four staves: Violin 1 (Vln. 1), Violin 2 (Vln. 2), Viola (Vla.), and Violoncello (Vlc.). The key signature is B-flat major (two flats) and the time signature is 3/4. Measure 22 starts with a treble clef and a key signature change to B-flat major. The Vln. 1 part has a whole rest in measure 22, followed by a half note G4 in measure 23, and a half note G4 with a slur in measure 24. The Vln. 2 part has a half note G4 in measure 22, followed by a half note G4 in measure 23, and a half note G4 with a slur in measure 24. The Vla. part has a half note G4 in measure 22, followed by a half note G4 in measure 23, and a half note G4 with a slur in measure 24. The Vlc. part has a half note G4 in measure 22, followed by a half note G4 in measure 23, and a half note G4 with a slur in measure 24. Measures 25-28 continue with similar melodic lines and slurs.

29

Vln. 1

Vln. 2

Vla.

Vlc.

Detailed description: This system contains measures 29 through 31. It features the same four staves as the previous system. Measure 29 starts with a treble clef and a key signature change to B-flat major. The Vln. 1 part has a half note G4 in measure 29, followed by a half note G4 in measure 30, and a half note G4 with a slur in measure 31. The Vln. 2 part has a half note G4 in measure 29, followed by a half note G4 in measure 30, and a half note G4 with a slur in measure 31. The Vla. part has a half note G4 in measure 29, followed by a half note G4 in measure 30, and a half note G4 with a slur in measure 31. The Vlc. part has a half note G4 in measure 29, followed by a half note G4 in measure 30, and a half note G4 with a slur in measure 31. Measures 29-31 continue with similar melodic lines and slurs.