

# Organ Concerto HWV 309 Mvt 1

Violin 1

For string quintet

GF Handel

Arr. Dan Oppenheim

Adagio ♩ = 40

9

Viola 1

Musical score for Viola 1, measures 9-36. The score is written in treble clef with a key signature of one flat (B-flat) and a common time signature (C). The tempo is marked Adagio with a quarter note equal to 40 beats per minute. The score begins at measure 9 with a whole rest. The music features a variety of rhythmic patterns, including eighth and sixteenth notes, and rests. Trills are indicated with 'tr' above notes in measures 20, 32, and 36. Measure numbers 12, 16, 20, 23, 27, and 32 are marked at the beginning of their respective staves.



# Organ Concerto HWV 309 Mvt 1

Violin 2

For string quintet

GF Handel

Arr. Dan Oppenheim

Adagio ♩ = 40

9

Viola 1

Musical score for Viola 1, measures 9-44. The score is written in treble clef with a key signature of one flat (B-flat) and a common time signature (C). The tempo is Adagio, with a quarter note equal to 40 beats per minute. The score consists of eight staves of music, each starting with a measure number (9, 12, 16, 20, 24, 32, 38, 44). The music features a variety of rhythmic patterns, including eighth and sixteenth notes, and rests. There are some dynamic markings, such as a fermata over a note in measure 20 and a '4' above a measure in measure 24. The score ends with a double bar line and repeat dots in measure 44.

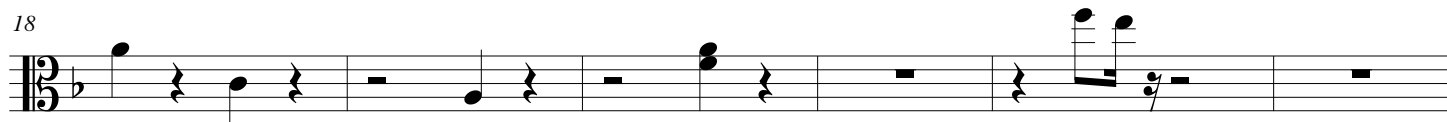
# Organ Concerto HWV 309 Mvt 1

Viola 1

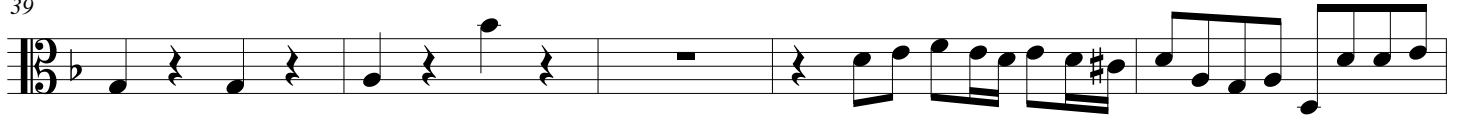
For string quintet

GF Handel  
Arr. Dan Oppenheim

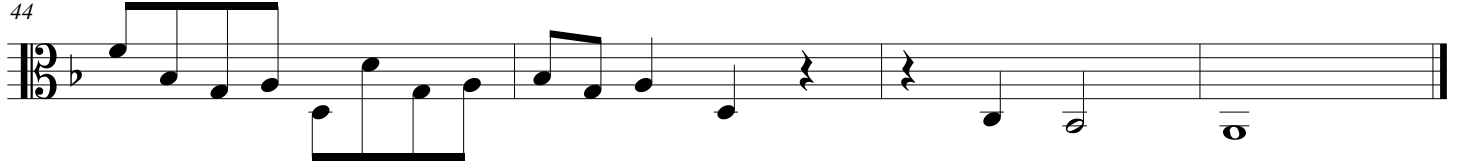
Adagio ♩ = 40



39



44



# Organ Concerto HWV 309 Mvt 1

Viola 2

For string quintet

GF Handel

Arr. Dan Oppenheim

Adagio ♩ = 40



5



10



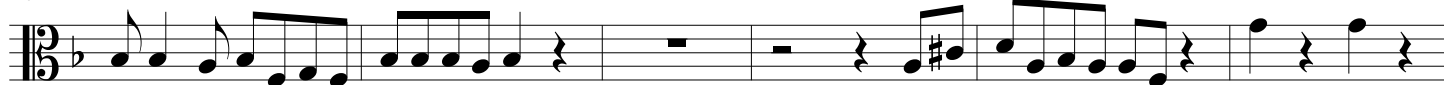
14



21



26



32



43



# Organ Concerto HWV 309 Mvt 1

Cello

For string quintet

GF Handel

Arr. Dan Oppenheim

Adagio ♩ = 40

6

12

20

26

32

38

43

# Organ Concerto HWV 309 Mvt 1

Score

Adagio  $\text{♩} = 40$

For string quintet

GF Handel

Arr. Dan Oppenheim

Violin 1

Violin 2

Viola 1

Viola 2

Cello

This system contains the first five staves of the score. The Violin 1 and Violin 2 parts are mostly rests. The Viola 1, Viola 2, and Cello parts have active music. A fermata is placed over the first two measures of the Cello part.

6

Vln. 1

Vln. 2

Vla. 1

Vla. 2

Vlc.

Viola 1

Viola 1

This system contains staves 6 through 10. The Violin 1 and Violin 2 parts enter at measure 6 with a rhythmic pattern. The Viola 1 and Viola 2 parts continue their previous lines. The Cello part has rests in measures 6 and 7, then resumes. A second fermata is placed over the first two measures of the Viola 1 part.

11

Vln. 1

Vln. 2

Vla. 1

Vla. 2

Vlc.

This system contains staves 11 through 15. All parts continue with their respective musical lines. The Cello part has rests in measures 12 and 13.

16

Vln. 1  
Vln. 2  
Vla. 1  
Vla. 2  
Vlc.

This system contains measures 16 through 20. The first violin (Vln. 1) part features a complex melodic line with many sixteenth notes and some slurs. The second violin (Vln. 2) part has a similar but slightly different rhythmic pattern. The violas (Vla. 1 and Vla. 2) and violoncello (Vlc.) parts are mostly rests, with some notes appearing in the later measures of the system.

21

Vln. 1  
Vln. 2  
Vla. 1  
Vla. 2  
Vlc.

This system contains measures 21 through 25. The first violin (Vln. 1) part has a trill (tr) in measure 22. The second violin (Vln. 2) part continues with its melodic line. The violas (Vla. 1 and Vla. 2) and violoncello (Vlc.) parts have more active lines, with the cello playing a steady eighth-note pattern.

26

Vln. 1  
Vln. 2  
Vla. 1  
Vla. 2  
Vlc.

This system contains measures 26 through 30. The first violin (Vln. 1) part has a melodic line with some slurs. The second violin (Vln. 2) part has a more active line with many sixteenth notes. The violas (Vla. 1 and Vla. 2) and violoncello (Vlc.) parts also have active lines, with the cello playing a steady eighth-note pattern.

31

Vln. 1

Vln. 2

Vla. 1

Vla. 2

Vlc.

tr

tr

Detailed description: This system contains measures 31 through 35. The first violin part (Vln. 1) features a melodic line with slurs and trills (tr) in measures 31, 32, and 35. The second violin part (Vln. 2) has a similar melodic line with trills in measures 31 and 32. The viola parts (Vla. 1 and Vla. 2) provide harmonic support with sustained notes and rests. The cello part (Vlc.) has a simple bass line with rests and notes.

36

Vln. 1

Vln. 2

Vla. 1

Vla. 2

Vlc.

tr

tr

Detailed description: This system contains measures 36 through 40. The first violin part (Vln. 1) has a highly technical passage with rapid sixteenth-note runs and trills (tr) in measures 36 and 37. The second violin part (Vln. 2) has a more rhythmic accompaniment with slurs and trills in measures 36 and 37. The viola parts (Vla. 1 and Vla. 2) continue with harmonic support. The cello part (Vlc.) has a steady bass line.

39

Vln. 1

Vln. 2

Vla. 1

Vla. 2

Vlc.

3

3

3

Detailed description: This system contains measures 39 through 43. The first violin part (Vln. 1) features complex rhythmic patterns, including triplets (3) in measures 39 and 40, and a triplet in measure 42. The second violin part (Vln. 2) has a melodic line with slurs and triplets in measure 43. The viola parts (Vla. 1 and Vla. 2) provide harmonic support. The cello part (Vlc.) has a bass line with slurs and triplets in measure 42.

43

Vln. 1

Vln. 2

Vla. 1

Vla. 2

Vlc.

*tr*

*tr*

Detailed description: This is a page of a musical score, page 4, titled 'Score'. It contains five staves of music. The top staff is for Violin 1 (Vln. 1), the second for Violin 2 (Vln. 2), the third for Viola 1 (Vla. 1), the fourth for Viola 2 (Vla. 2), and the bottom staff for Violoncello (Vlc.). The music is in a key with one flat (B-flat major or D minor) and a 4/4 time signature. The score begins at measure 43. The Violin 1 part features a melodic line with a trill (tr) in measure 45. The Viola parts play a steady eighth-note accompaniment. The Violoncello part provides a bass line with some melodic movement. The score concludes with a double bar line at the end of the fifth measure.