

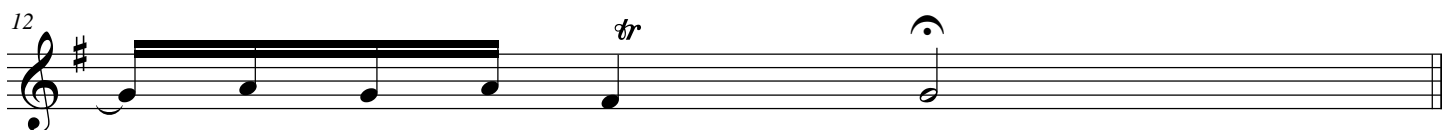
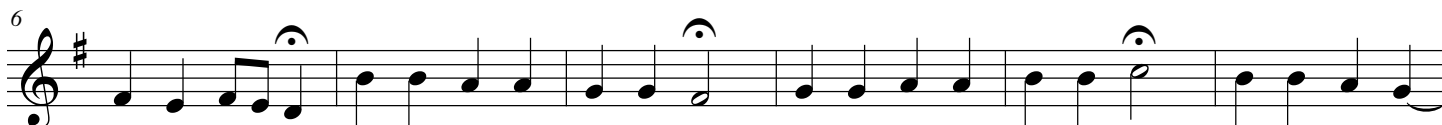
"Alle Menschen müssen sterben" BWV 643

Violin I

From Orgelbuchlein
Transcribed for String Quartet

JS Bach
Transcr. Dan Oppenheim

♩ = 44



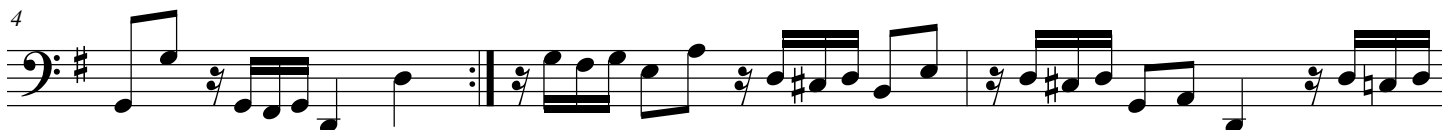
"Alle Menschen müssen sterben" BWV 643

Cello

From Orgelbuchlein
Transcribed for String Quartet

JS Bach
Transcr. Dan Oppenheim

♩ = 44



"Alle Menschen müssen sterben" BWV 643

Score

From Orgelbuchlein
Transcribed for String Quartet

JS Bach
Transcr. Dan Oppenheim

$\text{♩} = 44$

The image displays a musical score for a string quartet, transcribed from JS Bach's "Alle Menschen müssen sterben" (BWV 643) from the Orgelbuchlein. The score is arranged in three systems, each containing four staves for Violin I, Violin II, Viola, and Cello. The music is in G major (one sharp) and common time (C). The tempo is marked as quarter note = 44. The first system covers measures 1-3, the second system covers measures 4-6, and the third system covers measures 7-9. The score includes various musical notations such as notes, rests, slurs, and repeat signs. The Cello part features a prominent rhythmic pattern of eighth notes with slurs.

10

Vln. I

Vln. II

Vla.

Vc.

tr

Detailed description: This image shows a page of a musical score for the chorale "Alle Menschen müssen sterben" (BWV 643) by Johann Sebastian Bach. The page is numbered "2" and contains measures 10, 11, and 12. The score is arranged for four instruments: Violin I (Vln. I), Violin II (Vln. II), Viola (Vla.), and Violoncello (Vc.). The key signature is one sharp (F#), and the time signature is 4/4. The Violin I part starts with a fermata over a half note G4 in measure 10, followed by a melodic line in measure 11, and a trill (tr) over a half note G4 in measure 12. The Violin II, Viola, and Violoncello parts all play a rhythmic accompaniment of eighth notes throughout the three measures. The Viola part has a fermata over a half note G3 in measure 12. The Violoncello part has a fermata over a half note G2 in measure 12. The score is enclosed in a double bar line at the end of measure 12.